



STEPHEN D. CUTLER  
CENTER FOR INVESTMENTS  
AND FINANCE

*FactSet:*

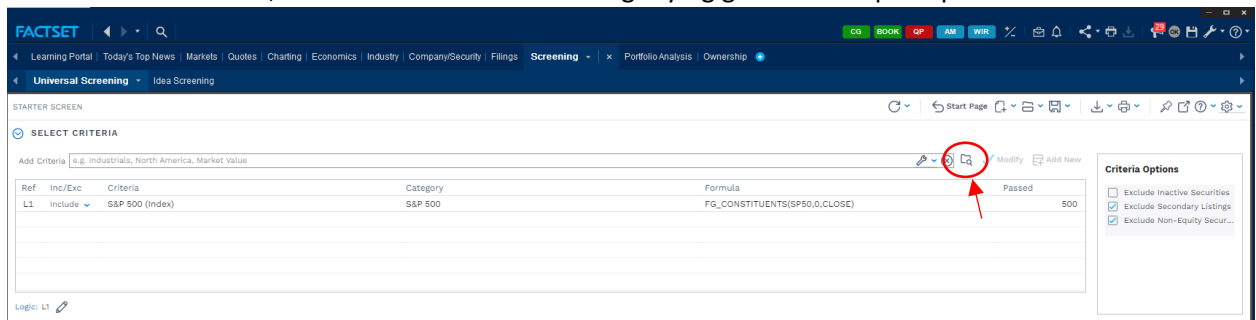
*Beginner's Guide to Equity Screening  
and Charting*

Created by: Tyson Corner ('22)

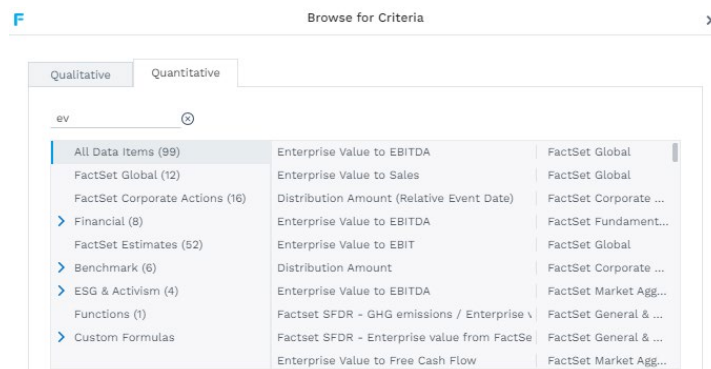
# The Equity Screen

## Universal Screening

- Select the 'Screening' tab on the top (it is next to the 'Filings' tab).
- Then select 'Starter Screen'.
- This tab will be pretty empty when you first open it up.
- Under 'Select Criteria', click on the folder with a magnifying glass icon to pull up search criteria.



- Once you have selected this icon you will see two options to search by. Qualitative and Quantitative. As an example of what can be found, I clicked on the Quantitative tab and then clicked in the search bar and type EV. This pulls up all EV function criteria that can be applied to your search.



- Overview of the Qualitative section
  - **Index** – Limit to all the companies currently found in a specific index, i.e. S&P 500, S&P Small Cap, Dow Jones Industrials, Exchange Indices, etc...
  - **Industry** - Limit to database-specific Sectors and Industries as well as NAICS and SIC codes.
  - **Geography** - Limit by a geographic area, such as country or state.
  - **Exchange** - Limit to all companies on a specific trading exchange.
  - **Security** - Limit by security type, Common Stock, Preferred Stock, Mutual Funds, IPO's, etc,
  - **Database** - Limit to companies covered by a specific database, such as Compustat, or listed in a stored portfolio.
  - **Identifier, Broker, and Linked Screen** - These require a more advanced knowledge of FactSet, you must know exactly what you're looking for.

- Seen below is a practice screen with parameters added. The red circle represents the button for downloading data into excel. The blue circle is the button for printing your current screen. The green circle is the button to make your screenings go full screen.

**NEW EQUITY SCREEN**

SELECT CRITERIA

Ref	Incl/Exc	Criteria	Category	Formula	Passed
L1	Include	AVG1(FF_SALES/ANN_R_0)	Formulas	AVG1(FF_SALES/ANN_R_0)	162,671
L2	Include	MEDIAN1(FF_ESTIMATE/EPS_LTG_MEAN_ANNUAL_ROLL_1,NOW,")	Formulas	MEDIAN1(FF_ESTIMATE/EPS_LTG_MEAN_ANNUAL_ROLL_1,NOW,")	162,671
L3	Include	FF_ENTRFR_VAL_EBITDA_OPER/ANN_R_0)	Formulas	FF_ENTRFR_VAL_EBITDA_OPER/ANN_R_0)	162,671
L4	Include	Industrials (Industry)	GICS - Multi Sourced -> Industrials	PUBLIC.GICS_SECTORN=20	274
L5	Include	United States (Geography)	North America -> United States	PUBLIC.F_COUNTRY="UNITED STATES"	40,509
L6	Include	Stock (Security)	Stock -> Stock	Formula not available	110,103

Logic: L4 AND L5 AND L6 AND (L1 AND L2 AND L3)

FORMAT RESULTS

RESULTS: 223

Tab 1

Symbol	Name	FR RBICS
1 MMM	3M Company	45202015
2 AOS	A. O. Smith Corporation	40102010
3 AAO	AAON, Inc.	40102010
4 AIR	AAR CORP	40151010
5 ABM	ABM Industries Incorporated	10102010
6 EPAC	Actuant Corporation Class A	40102030
7 AYI	Acuity Brands, Inc.	40101515
8 ACM	AECOM	40152510

## Company/Security

- First, click on the 'Company/Security' tab.
- This tab has an enormous amount of data within it, so most of what you need on a company can be found here.
- Overviews Tab

**FACTSET**

AXP-US LOCAL

AMERICAN EXPRESS COMPANY (AXP) \$156.52 Next Rpt Date: 21 Apr '23 Key Statistics FactSet Fundamentals / FactSet Estimates

REPORTS

Overview

SIGNALS

News Indicators

High Exposure to Supply Chain Risk

Business Description

Industry Metrics

Key Statistics

Corporate Information

Business Segments

EPS

Performance

EPS Estimate Revisions (%)

- Snapshot, Comps, Capital Structure, and ESG are the functions you will likely use most in the overviews tab.
  - Snapshot – Key statistics, business description, and performance charted against the benchmark will give you a fairly quick and concise view of the company to decide if you want to move forward.
  - Comps – the comps button in FactSet is extremely useful. It will give you the average and median of comparable companies. It also provides the list of comps that were used to arrive at the average and median. Additionally, the ADD COMPS button at the top allows you to add in more comps.
  - Capital Structure – This button allows you to quickly see Equity Capitalization, Debt Capitalization, and EV (Enterprise Valuation).
  - ESG – Not every company has ESG data available, but if you are looking for potential issues with their ESG structure and they have one it can be found here. ESG stands for Environmental, Social, and Corporate Governance.
- Charts
  - Two types of charts: price and valuation. These charts are not as useful as those in the 'Charting' tab.
  - A beneficial function of these charts is in 'Price'. You can add events with the **Events** button such as earnings or dividends.



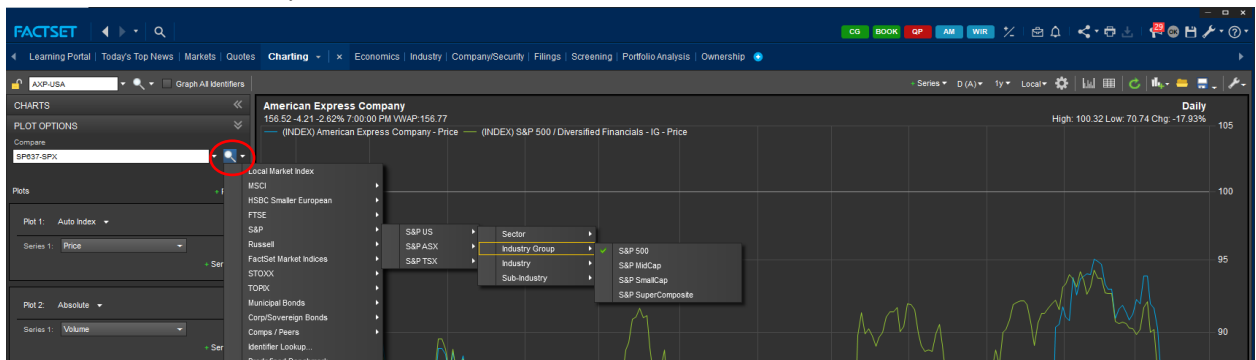
- News, Research, and Filings
  - This tab has more news than you need, so you should have an idea of what you're looking for beforehand.
  - Press releases, Earnings, Filings, and Investment Research are in general good places to start.
- Prices
  - This gives you overviews about the stock price overtime.
- Ownership
  - Ownership Summary gives you a quick overview of the breakdown in ownership and recent position changes.
  - Ownership Activity tells you the top 10 buys and sells as well as the top 10 new buys and sells.
  - Holder Type Analysis displays %OS Over Time; top institutional, mutual fund, and insider types.

- Financials
  - This entire tab is important when looking at the health of a company.
- Estimates
  - All Estimates - This tab will give you the number of analysts that worked on the estimates, what their long-term growth rate is, and the target price. This is a good place to start when working on your DCF to understand the general consensus.
- Credit Analysis, Transactions, and Activism, Management, and Governance
  - All good tabs to look through, not important to dive into in depth.

## Charting

### Comparisons

- This will take time to get used to, play around with it.
  - Comparisons are good, start there. Usually the S&P 500 is a good place to start.
    - To do this enter the charting tab and under 'Plot Options' click on **the magnifying glass** → S&P → S&P US → Industry Group → S&P 500. On your journey to overlaying this you will see many other options. Feel free to use any comparison and see how it looks. You won't break FactSet.



### Series

- Series are other things that can be added.
  - To do this click on the plus button with series next to it. To know what you want you will have to experiment and decide whether you are doing technical analysis or not. Certain types of technical analysis are programmed in and can be found in the [Technical Indicators](#) (the blue circle) tab under the series. The green circle is additional types of series that can be added.

